

# Oldfield School



Name \_\_\_\_\_

The name of my new school is \_\_\_\_\_

The address is \_\_\_\_\_

---

The telephone number is \_\_\_\_\_

The name of the head teacher is \_\_\_\_\_

School starts at \_\_\_\_\_ and finishes at \_\_\_\_\_

I will travel by car/bus/walking/bike/train circle the correct one

To get to school on time, I will need to leave my house at

\_\_\_\_\_

I will attend the school from \_\_\_\_\_ September 20\_\_

## Secondary school questionnaire

1. What things would you like to find out about your new school?

---

2. List three things you are looking forward to -

1 \_\_\_\_\_

2 \_\_\_\_\_

3 \_\_\_\_\_

3. List three things you think you might need help with -

1 \_\_\_\_\_

2 \_\_\_\_\_

3 \_\_\_\_\_

# Homework



In Year 7 you get more homework than you get in Primary school. Teachers will be stricter about getting it done and handed in on time.

To help you do this you will be able to access it on satchel one through the Oldfield school website. It tells you the task and completion date.

## Homework questionnaire

How do I find out how long will I need to spend on my homework?

---

How will I know what to do? \_\_\_\_\_

---

What will happen if I forget to do it or forget to hand

it in? \_\_\_\_\_

---

What should I do if I find the homework is too difficult? \_\_\_\_\_

---

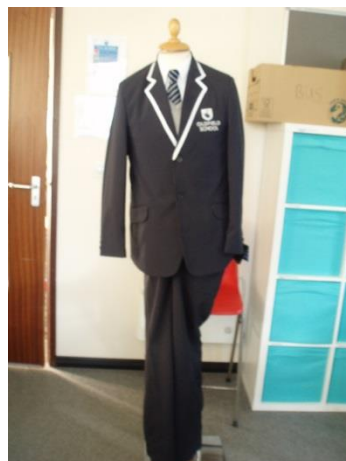
## Equipment

At Oldfield school, you must have your own pencils, pens, ruler, rubber and calculator. These are the most important items to bring to school.



- It might be helpful to make a checklist to make sure you have everything for the day.
- Pack your bag the night before.

## School uniform & PE Kit



# School rules

## Why do we have them?

Every school will have rules for the classroom, corridors and assembly as well as rules about homework, break times and uniform.

Can you think of the reasons why school needs rules?

---

---

---

## Breaking the rules!

There will always be consequences for breaking the rules. So, it's important to know what the rules are and what will happen if you don't follow them.



## Mobile phones



Mobile phones must be switched off and out of sight (in your bag) during the school day.

They must not be used for any purpose including making calls, messaging or to send pictures or access the internet.

If you need to get in touch with your parents during the school day, you must go to reception.

If you are found to be using your phone whilst in school, it will be confiscated.

## Lunchtime

- Sandwiches or dinners?
- Where do I eat?
- Where do I go at lunchtime?
- Who could I talk to if I have a problem?

