



**OLDFIELD
SCHOOL**

PROSPECTUS





CONTENTS

- 02 – Welcome
- 04 – Learning and Achieving
- 08 – Care, Guidance and Support
- 12 – Enrichment and
Extra-Curricular activities
- 16 – Partnership Working
- 20 – Oldfield Sixth Form
- 24 – Getting in Touch



OLDFIELD SCHOOL

We provide an exceptional education in an environment that challenges all students and fosters ambition.

Our students have respect for themselves, each other and their school and are well-prepared to face the world as compassionate, confident and resilient young people.

To inspire. To learn. To succeed.

The importance of education and our role as a school in developing our young people cannot be underestimated. We want to ensure our students are fully prepared for their future careers and have the skills and knowledge to allow them to flourish and succeed. Teaching and learning is exemplary at Oldfield School and our well-qualified and experienced staff work very hard with all students to achieve academic excellence. We are proud of the high-quality education we provide, the inspirational teaching and learning, excellent behaviour and conduct of our students and their academic achievement.

In addition to academic success, we have a strong focus on extra-curricular activities. Our programme includes sports, performing arts and a wide range of other activities. These opportunities provide memorable and rewarding experiences for our students and make a significant contribution to their development.

We have an exceptional reputation as a caring and inclusive school and we strive to meet the needs of each individual. The high-quality pastoral support is a key factor in the academic success of our students and their personal progress and wellbeing.

We aim to work in partnership with students and parents to raise students' expectations and standards of achievement in a caring, secure and supportive environment. We value enormously the links between school and home; success is built on strong partnerships.

I hope this prospectus goes some way to answering some of the questions you may have and gives you an insight into life at Oldfield School. I look forward to meeting you at a future date.

Steven Mackay
Headteacher



“Teaching and learning is exemplary at Oldfield School and our well-qualified and experienced staff work very hard with all students to achieve academic excellence.”





LEARNING AND ACHIEVING

The central philosophy on which the curriculum of Oldfield School is based, is that all students are of equal worth and that each has an entitlement to a learning environment and curriculum that meets their individual needs. We have experienced, enthusiastic and well-qualified teachers, committed to promoting a learning environment in which each and every student is able to achieve their potential.

"I would like to say a huge thank you to you and your staff for our daughter's time at Oldfield School. Our daughter has been at the school all the way from Year 7-13 and has really enjoyed her time and also has come out with fantastic results! She worked hard and had superb and dedicated teachers to guide and encourage her throughout her time at Oldfield. We are grateful to Oldfield School and want to thank you all very, very much."

Parent of Year 13 student

Oldfield School has always been proud of its high academic attainment, remaining consistently above the national average year-on-year.

Student attainment is carefully tracked and monitored against aspirational targets to maximise the progress of our students. This is also used to inform our carefully targeted and individualised intervention programme.

A full breakdown of our results is available separately in the Results Booklet.

The behaviour and conduct of our students is excellent. We have high expectations with regards to both of these and as a consequence our students learn in a calm working environment and treat their teachers and peers with respect. We recognise and reward good work and behaviour, so that students feel that positive behaviour is valued and acknowledged. The principles underlying this policy are based on respect - for self, for others and for the environment.

We very much believe in recognising and celebrating individual students' strengths and achievements. House points are awarded for good behaviour and can be exchanged for prizes.

“Leaders encourage pupils to be involved in the life of their school. The extensive work of the school council and the Year 11 prefect team illustrates this well. Pupils spoke of the many clubs and activities that they are involved in”.

Ofsted



CURRICULUM INFORMATION

The curriculum is delivered through eight learning areas. These are: Creatives; English; Humanities; Maths, Computing and Business; Modern Foreign Languages; PE and Dance; Science and Social Sciences.

SUBJECTS

At Key Stage 3 (Years 7, 8 and 9) all students follow courses in the following subjects:

Art	Dance
Design & Technology	Drama
English	Geography
History	ICT and Computing
Mathematics	
Modern Foreign Languages (French and/or Spanish)	
Music	PE
PSHE	Religious Studies
Science	

At Key Stage 4 (Years 10 and 11) in addition to PE, students follow courses in:

English Language	English Literature
Mathematics	Science
PSHE	

In addition to these compulsory subjects students are able to choose further courses from a list similar to:

Art and Design: Fine Art	
Art and Design: Photography	
Business Studies	Child Development
Computer Science	Creative iMedia
Dance	Drama
Design & Technology: Product Design	
Design & Technology: Textiles	
Food Preparation and Nutrition	
French	Geography
History	Media Studies
Music	Physical Education
Religious Studies	Sociology
Spanish	Sports Studies

HOMEWORK

Homework is an integral part of the teaching and learning process and is a vital part of an individual's education. Not only does it extend our students' education, but it teaches self-discipline, encourages independent learning and a sense of responsibility.

MORE ABLE STUDENTS

'More able' students are broadly defined as those that are making more progress in a specific subject area than the national expectations. Oldfield School prides itself on the high levels of progress made by our more able students (as seen by the significant number of grades achieved at the highest level at GCSE and A Level). This is achieved by ensuring all our students have the highest of expectations placed upon them, providing them with an intellectually challenging learning environment and ensuring there is a wide and varied extra-curricular programme to provide cultural and academic stimulation beyond the classroom.





CARE, GUIDANCE AND SUPPORT

Seeing students as individual learners and promoting a fully-rounded education is at the heart of what we aim to achieve. We work in partnership with students and parents to raise students' expectations and standards of achievement in a caring, secure and supportive environment.

"My son, who is a current Year 10 student, has really enjoyed his time at Oldfield. I feel very confident that he will be fully supported in this first year of GCSE study by the teachers and he has already expressed his excitement at getting to grips with subjects he has chosen to study."

Parent of Year 10 student



TRANSITION FROM PRIMARY SCHOOL

Oldfield staff visit our partner primary schools to meet prospective students and liaise with their teachers. Students are then invited to Oldfield School for an Induction Day at the end of Year 6 and a Parents' Information Evening. Parents can also request additional visits to the school. There are tailored transition arrangements for students who have additional needs or difficulties regarding transition.

On entering the school, students in Year 7 are placed in mixed ability tutor groups. Each student is supported by a tutor who will monitor their group's attendance, celebrate their achievements and be the first point of contact for both student and parents to raise any concerns. The tutors are then supported by the Head of Year 7 who will coordinate the year group, developing a year group ethos so that students feel part of the wider school community.

HOUSE SYSTEM

We have a house system to allow for greater social integration and encourage a positive and healthy ethos of competitiveness and community.

The four school communities are named after Roman Gods and were selected through a whole-school student vote.

The Houses are:



There are a comprehensive range of inter-house competitions and events, culminating in Sports Day and the winning house being awarded the house shield at the end of the year.

STUDENT LEADERSHIP

We have many opportunities for students to develop their leadership skills throughout their time at Oldfield School.

School Council

The council consists of student members who have been selected based on written application. There are also four representatives from each year group who have been elected by the student body. The team is divided into four committees, to debate and negotiate issues concerned with the whole-school community:

- Teaching and Learning
- Behaviour for Learning
- Learning, Environment and Sustainability
- Student Wellbeing.

The committee groups are chaired by the Head Boy, Head Girl, Head Student and Deputy roles and meet eight times in the year with the Assistant Headteacher. Representatives also meet with the Headteacher and the governors in order to discuss issues and initiatives relating to school life.

Prefects

From the moment students join the school, we encourage them to aspire towards becoming a prefect. At the end of every academic year, Year 10 students are given the opportunity to apply to join the prefect body.

Prefects are selected on the basis of how well they reflect the key values of the school. We expect applicants to have very high attendance with exemplary punctuality, exceptional behaviour records and the highest standards of uniform. Similarly, conduct in and around the school must be beyond reproach.

We ask prefects to represent the school in many ways including; escorting visitors on tours of the site, assisting staff on open evenings, providing invaluable academic support to younger students within a variety of roles, supporting staff on lunchtime duty, and helping to guide new students through the induction process.

SPECIAL EDUCATIONAL NEEDS AND DISABILITY

For students who may need additional support with their studies or have specific requirements, we have a full-time SENCO to coordinate support where appropriate. SEND students have access to the Hemmings' Centre, which is a purpose built SEND building that allows students time out, sensory space, and separate rooms for provision to take place in. If your child has an Education and Health Care Plan (EHCP) or a specific learning difficulty and would like to know more about the school's SEND delivery then this is available on the school's website. It is strongly advised that you make an appointment to see the SENCO.

PASTORAL CARE AND SUPPORT

We offer a range of pastoral support for students who are encountering issues during their time at school. We tailor support to suit the needs of the individual student, which could include:

- 1:1 discussions with the Tutor, Head of Year or the SENCO
- Regular 'monitoring' meetings with parents/carers
- Small group support (e.g. a social skills group) and/or include a specific resource to support your son/daughter.

We also have Pastoral Support Officers and a School Nursing Officer on site as well as a range of outside services who support students in school such as the School Nursing Service and Off the Record.



The Hemmings' Centre

ENRICHMENT AND EXTRA-CURRICULAR ACTIVITIES

We believe a vibrant and wide-ranging extra-curricular and enrichment programme is an essential part of personal development and wellbeing for any student. We aim to encourage participation from all of our students and provide a selection of activities to engage a variety of interests.

“The Year 9 Battlefields trip put the history into perspective. The massive scale of the war was clear from the size of the cemeteries and the scale of the damage we witnessed. The Last Post ceremony was a touching experience.”

Year 11 Student

“I’ve always been an avid fan of Shakespeare, so when I had the opportunity to see Hamlet for my A Level preparation I just couldn’t pass on it. First impressions were good; the set was simple, the costumes appeared periodically authentic and the lighting changes helped with the flow of the story. I thought that, overall, the production was amazing and each character (with the exception of Laertes who seemed to lack a little spirit) was performed fantastically. It was a production I’d love to see again and was a great experience.”

Year 13 student

ENRICHMENT AND EXTRA-CURRICULAR ACTIVITIES

The thriving music department at Oldfield School plays host to a variety of extra-curricular activities. All students, regardless of experience or level of expertise, are encouraged to contribute to the life of the department including; concert band, senior choir and junior choir, string ensemble, samba band, ukulele group and within a variety of school concerts and events.

Throughout the music curriculum, pupils are exposed to a variety of musical styles and instruments whilst developing listening and appraising, composition and performance skills. Oldfield School runs a scheme which allows interested students to have lessons in groups or individually on certain musical instruments during school time. This tuition fully complements the work completed within the curriculum and is an opportunity for individuals to excel within musical performance.

“We believe that learning to play a musical instrument offers a child a great deal more than musical skills. It builds self-discipline through practice, develops social skills through ensemble playing and improves a child’s performance in other areas of the curriculum.”



We are fortunate in having excellent facilities for the performing arts, including drama and dance studios. Both of these subjects are taught discretely in the KS3 curriculum as we firmly believe in the importance of an exciting and stimulating performing arts programme for all, with a real emphasis on excellence, participation, cooperation and enjoyment to enhance teaching and learning.

We also have outstanding sporting facilities and a very active and successful physical education programme. Students are encouraged to attend a broad range of activities including after-school sports clubs, inter-house competitions and inter-school fixtures. There are also many sporting tournaments played away throughout the year.



OLDFIELD SCHOOL

Example of activities offered in curriculum time:

Athletics	Badminton
Basketball	Cricket
Dance	Drama
Fitness	Football
Gymnastics	Handball
Leadership Skills	Music
Netball	Rounders
Softball	Rugby
Tennis	Volleyball

Example of extra-curricular activities:

Art	Athletics
Badminton	Band
Basketball	Blues Band
Cricket	Cross country
Dance; Performance group	Street dance Dance company
Debating	Drama
Duke of Edinburgh	Fitness
Football	Gymnastics
Handbells	ICT
Junior choir	Language club
Netball	Outdoor pursuits
Rounders	Rugby
Senior choir	Table tennis
Tennis	Trampolining
Volleyball	

The facilities at Oldfield include tennis and netball courts, pitches for rugby and football, rounders, an athletics track, a fitness suite and contemporary dance studio.

Our sports hall has a full-size basketball court and four badminton courts and we have a MUGA (multi use games area) which is used by students in lessons and at break times. Our state-of-the-art drama studio is used for lessons and after-school rehearsals.

At Oldfield we believe in encouraging wider experiences for all students and that learning experiences outside the classroom can be some of the most memorable moments in a child’s school life. We offer a variety of school trips, and start in Year 7 with an activities day with team-building games and outdoor pursuits. Other opportunities include trips to Barcelona, Paris, Russia, a WW1 Battlefield trip, a school ski trip, World Challenge trips to Morocco and Swaziland and students have the opportunity to participate in the Duke of Edinburgh Award upto Gold level. In the Summer Term we run an activities week for the whole school. This includes trips abroad, day trips in the local area and further afield, surfing lessons on the North Devon coast and many in-school activities. The week culminates in a whole school sponsored walk, making full use of our excellent location on the edge of the Cotswold Way.





PARTNERSHIP WORKING

Any thriving and successful school depends on the relationship with its local community and we recognise the importance of this at Oldfield School. We aim to maintain a partnership with our students, their parents and our local community and see communication as key to the success of this partnership.

“What warm, welcoming, engaged teachers!”

Parent of Year 7 student

COMMUNICATION WITH PARENTS

We appreciate that our partnership with parents is vital.

- Students are monitored regularly by their tutor and Head of Year.
- There are two parents' evenings for most year groups during the year when parents and students can discuss progress with teachers.
- Parents also receive three reports each year.
- We send out a regular newsletter, *Outlook*, which covers important dates, a variety of articles and celebrates activities that students have been involved in.
- Parents with internet access will also have a ParentPay account, which allows online payments to the school for trips, books etc .
- We communicate via email for the great majority of school communications.



OLDFIELD SCHOOL ASSOCIATION (OSA)

The OSA is the Parent Teacher Association at Oldfield School – a group of parents and school staff who raise funds for the school. These are used to purchase items that are not covered by the school budget but which enhance the opportunities given to the students. This could involve funding a piece of classroom equipment, e.g. musical instruments or cooking utensils, or subsidising a school trip organised by a specific department.

The OSA raise money by organising events for parents, staff and students during which everyone can get to know each other in a relaxed and informal environment and hopefully have some fun at the same time. The OSA organise:

- Quiz nights, in October and March. A great evening of entertainment, with a lot of healthy competition.
- The Christmas Fair every December within the school grounds.
- ‘Battle of the Bands’ evening where student bands compete against one another to win the chance to have their song professionally recorded. This event is organised in conjunction with the music department and takes place in July.
- Refreshments at a variety of evening events held by the school, for example the Year 7 New Parent Evening and the Key Stage Celebration Evening in the summer.

GOVERNORS

The Governing Body at Oldfield School aims to raise standards of achievement for all students, which involves providing a strategic view for the school, acting as a ‘critical friend’ and assuring accountability in upholding the strategic aims of the school. The governors liaise regularly with the staff at Oldfield and welcome any comments or queries from parents and staff alike.





SUCCESS, SUPPORT AND ENGAGEMENT: OLDFIELD SIXTH FORM

Throughout their time at Oldfield School students will be given clear, supportive and impartial advice on the next step of their educational journey. We ensure our students have the information and develop the skills they need to succeed in the future. For many of our students, A levels at our Sixth Form is the next logical step.

“Excellent school and brilliant and caring staff!”

Parent of Year 11 student

We offer a wide range of subject courses at Oldfield including:

Art	Fine Art
Biology	Business Studies
Chemistry	Computer Science
Dance	Drama & Theatre Studies
Economics	English Language
English Literature	Film Studies
Food, Nutrition & Health	Geography
Health and Social Care	History
ICT	Mathematics
Mathematics (Further)	Music
Philosophy and Ethics	Photography
Physical Education	Physics
Psychology	Sociology
Spanish	Textiles

We believe the Sixth Form experience should be one of discovery of a wider academic and social world and enthusiasm to learn. We have three key aims for all our Sixth Form students:

ACADEMIC SUCCESS

We want to ensure that all students leave Oldfield Sixth Form with the very best results they can achieve. Already our results are outstanding and students achieve high academic results. Our small class sizes, which allow personal attention from our highly trained, specialist staff, are a key pillar to this success.

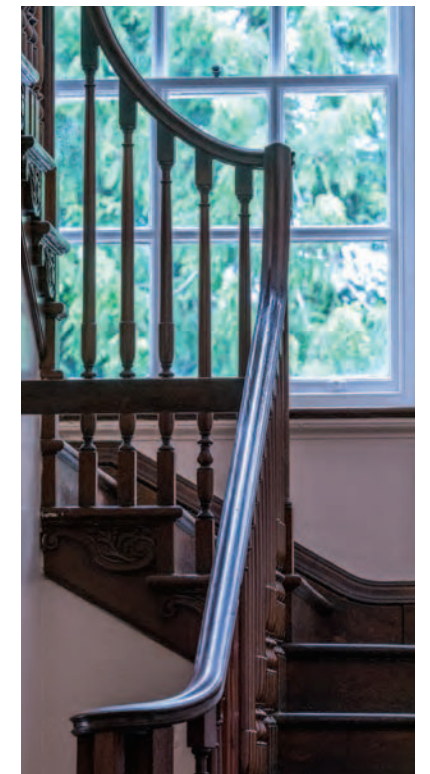
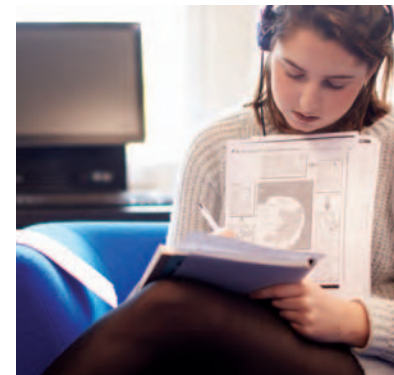
GUIDANCE AND SUPPORT

Sixth Form studies carry their own pressures and stresses. At Oldfield we strive to ensure that students are well supported, positive and enthusiastic learners. They meet daily with their tutors and the Head of Sixth Form has an open door policy where any student can come to talk through concerns and worries. We also run a well-developed career and higher education guidance programme so that whatever our students want to do post A levels, there will be events, talks and workshops to answer their questions and meet their needs.

WIDER COMMUNITY

Students are fully involved in the wider school community and have the opportunity to engage with a wealth of opportunities above and beyond the classroom. Our aim is to foster independence and critical thinking, allowing students to become well-rounded, educated people who go on to play a positive role in our society. So whether they want to be part of our highly successful Duke of Edinburgh programme; play an active role in the Sixth Form Committee; take part in sporting, cultural and scientific clubs and events or help and support students throughout the school, we have something to suit all ambitions.

A separate Sixth Form prospectus with further information is available on request and also available to download from our website.



GETTING IN TOUCH

We firmly believe the best way to find out about us is to come and see us. We welcome visits during term time and our students – our best ambassadors – will show you around. If you would like to get in touch or have any questions, please contact us using the information below.

OLDFIELD SCHOOL
KELSTON ROAD
BATH
BA1 9AB

T 01225 423582/3

F 01225 464986

E ENQUIRIES@OLDFIELDSCHOOL.COM

W OLDFIELDSCHOOL.COM





OLDFIELD SCHOOL

